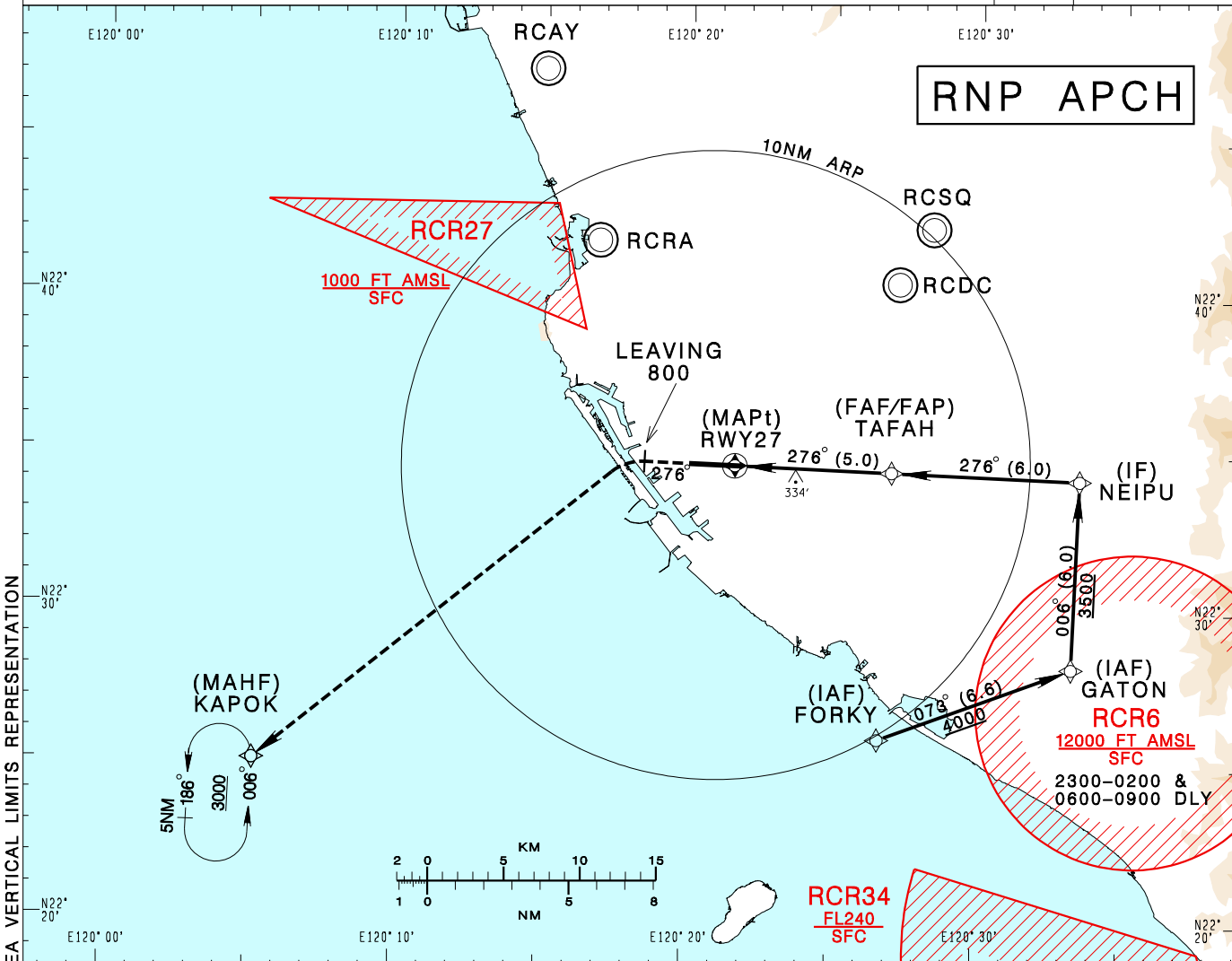


高雄國際機場
KAOHSIUNG INTL AD

RCKH
RNP RWY27

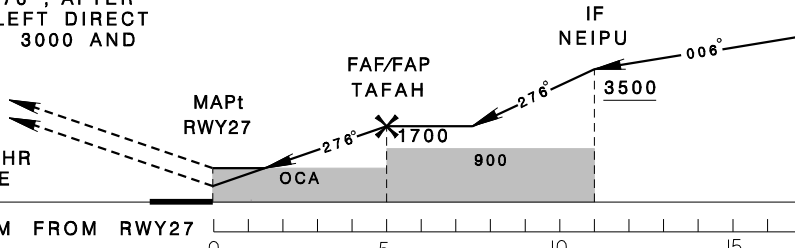
KAOHSIUNG APP 124.7 125.7	KAOHSIUNG TWR 118.7 120.7	ATIS 127.8	VAR 4° W 	 12100' MSA ARP 25NM	
Apt Elev: 32'	Rwy27 DTHR Elev: 31'	Trans Level: FL130			Trans Alt: 11,000'
BEARINGS ARE MAGNETIC; DISTANCES ARE NAUTICAL MILES; ELEVATIONS, HEIGHTS IN FEET					



DIST to DTHR	2NM	3NM	4NM	5NM
ADVISORY ALT	730	1060	1380	1700

MISSED APCH:
CLIMB ON COURSE 276°, AFTER LEAVING 800, TURN LEFT DIRECT TO KAPOK, CLIMB TO 3000 AND HOLD.

VPA 3.05°
RDH 50 at displaced THR
223436.22N 1202140.18E



MINIMA (OCA IN FT, VIS IN M, OCH IN FT)

CATEGORY		A	B	C	D
LNAV/VNAV	STRAIGHT IN	500/1500	500/1500	469	
	STRAIGHT IN (ALS OUT)	500/2200	500/2200	469	
LNAV	STRAIGHT IN	590/1500	590/1500	558	590/1800 558
	STRAIGHT IN (ALS OUT)	590/2200	590/2200	558	590/2500 558

NOTE

1. CIRCLING NOT AUTHORIZED.
2. BARO-VNAV NOT AUTHORIZED BELOW 0° C.
3. DME/DME NOT AUTHORIZED.
4. THE INITIAL APCH SEGMENT INFRINGES RCR6, PRIOR COORDINATION WITH ROCAF WILL BE COMPLETED BY ATC BEFORE ISSUING CLEARANCE DURING RCR6 ACTIVE HOURS.
5. ATS SURVEILLANCE REQUIRED.

CHANGES: NEW PAGE NUMBER, UPDATE RESTRICTED AREA VERTICAL LIMITS REPRESENTATION